

Connor Bayou (updated 01.17.11)

Following a public planning process and an extended period of deliberation by the Parks Commission, the master plan for this 142-acre site with over three-quarters of a mile of frontage on the Grand River is scheduled to be approved by the commission in February 2011. The plan includes improvements to the entrance, new parking areas, trails, and boardwalks as well as improvements to an existing log home which will be made available for daily rentals. Detailed plans and specifications will be developed this spring for construction later in 2011.





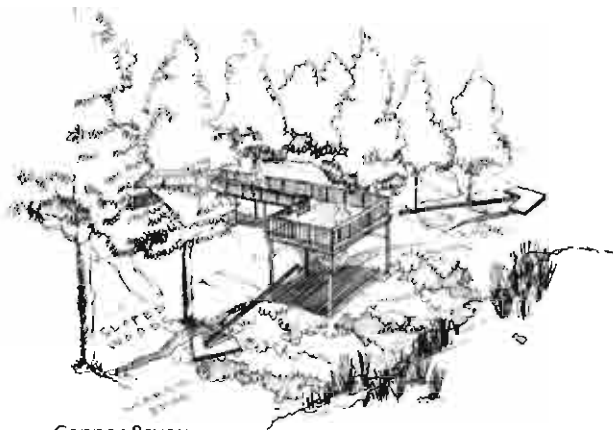
Connor Bayou Park Main Use Area Concept Diagram

January 20, 2011



Connor Bayou Park Site Master Plan - West

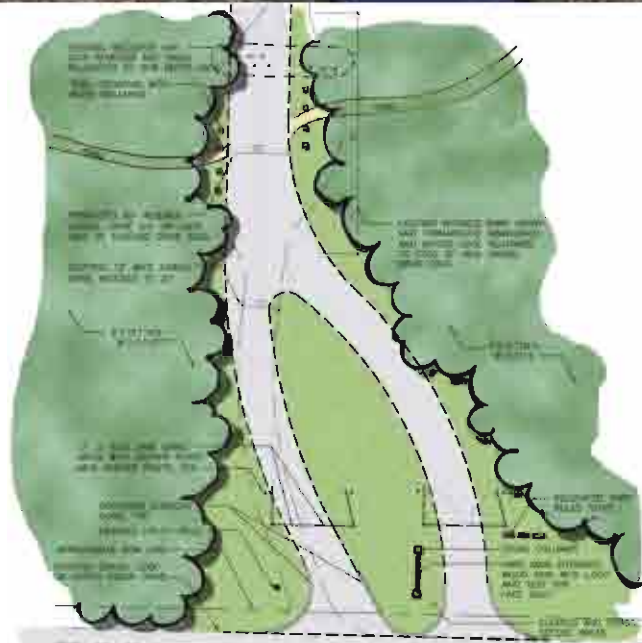
January 20, 2011



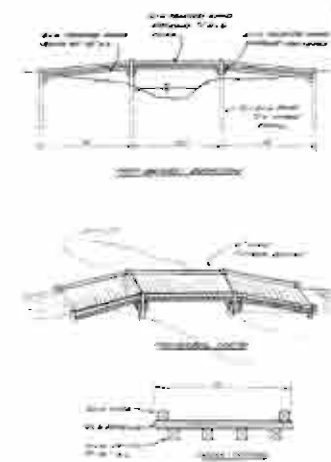
Connor Bayou Overlook Deck Concept Perspective

Connor Bayou Park Site Master Plan – East

January 20, 2011



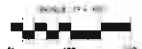
Connor Bayou Main Entrance Drive Area Enlargement Plan

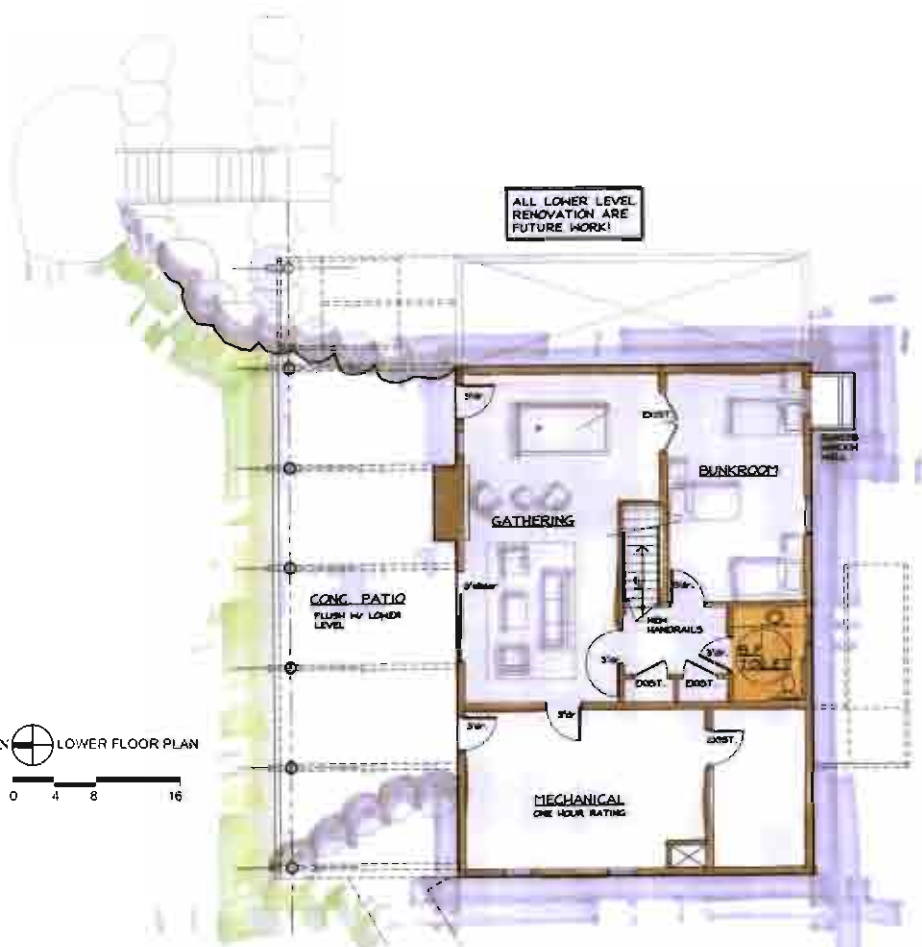


Connor Bayou Footbridge Conceptual Sketches



Orange County Parks & Recreation Commission





Connor Bayou Park Main Building Plan View Diagrams

January 20, 2011



Connor Bayou Park Main Building Concept Diagrams

January 20, 2011