








Musketawa Trail

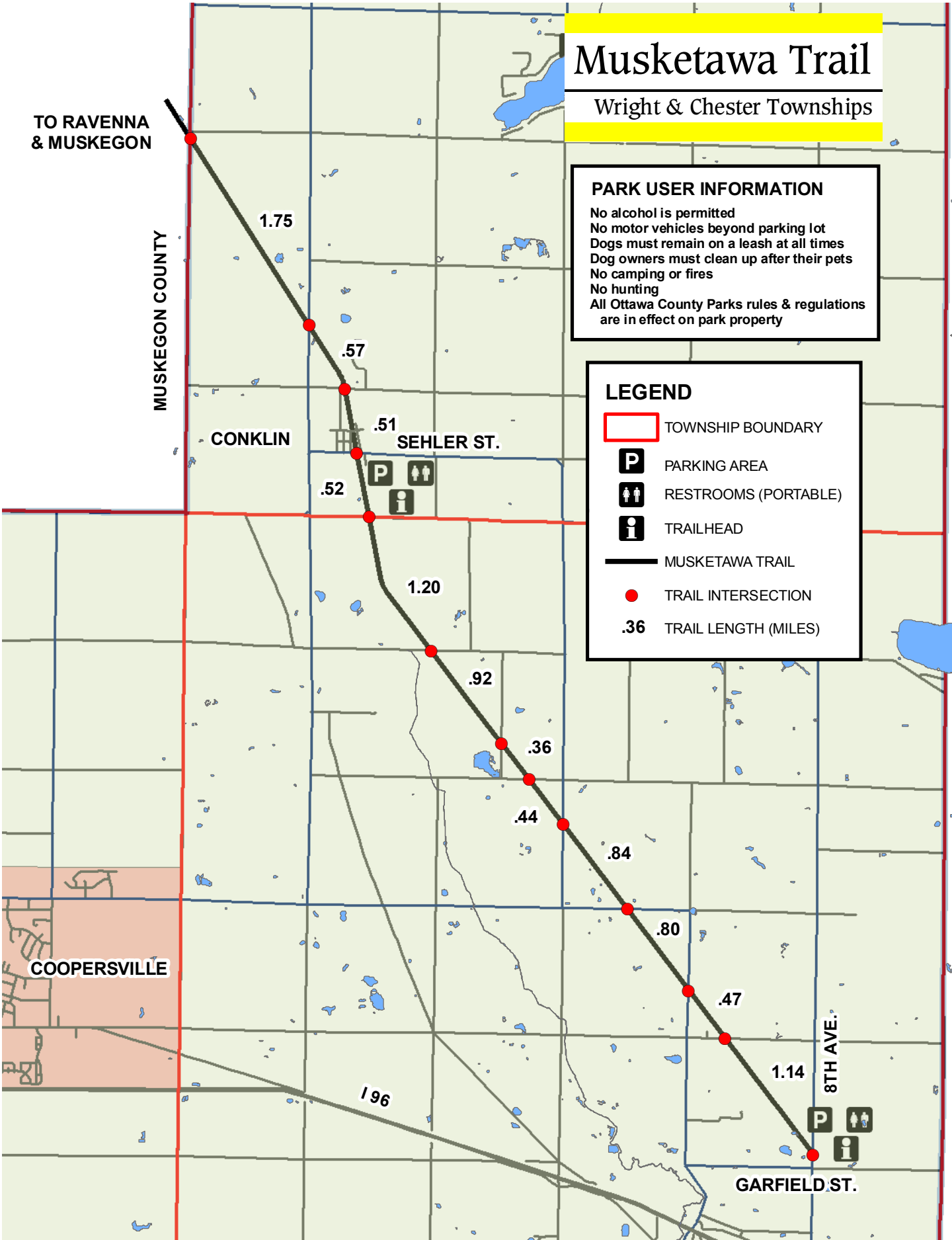
Wright & Chester Townships

PARK USER INFORMATION

No alcohol is permitted
No motor vehicles beyond parking lot
Dogs must remain on a leash at all times
Dog owners must clean up after their pets
No camping or fires
No hunting
All Ottawa County Parks rules & regulations are in effect on park property

LEGEND

-  TOWNSHIP BOUNDARY
-  PARKING AREA
-  RESTROOMS (PORTABLE)
-  TRAILHEAD
-  MUSKETAWA TRAIL
-  TRAIL INTERSECTION
-  TRAIL LENGTH (MILES)



TO RAVENNA
& MUSKEGON

MUSKEGON COUNTY

KENT COUNTY

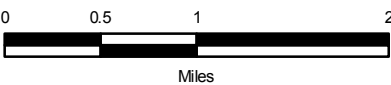
CONKLIN

SEBLER ST.

COOPERSVILLE

8TH AVE.

GARFIELD ST.



Ottawa County Parks & Recreation Commission

Musketawa Trail

Conklin Trailhead
19610 Main Street
Conklin, MI 49403

Marne Trailhead
15295 – 8th Avenue
Marne, MI 49435

The Musketawa Trail is a 26 mile paved (12 foot wide) all-season linear park constructed on an abandoned rail line between Marne and Muskegon. Ottawa County Parks manages the 10 mile section of trail from Marne to the Muskegon County line between April 1 and November 30. Trail uses include hiking, biking, roller-blading, snowmobiling and horseback riding. The Musketawa Trail was acquired and developed by the Michigan Department of Natural Resources with assistance from the Friends of the Musketawa Trail.

For more information, visit the Friends web site at www.musketawatrail.org or contact the county parks office. A brochure is also available. Questions regarding snowmobile use and trail conditions, contact Oscar Reed at (231) 744-5731 (West Shore Snowmobile Council representative).

Facilities

- Picnic tables in parking areas
- Portable toilets in parking areas.

** Barrier free facilities include the 12 foot wide paved trail.*

Park Hours

The Musketawa Trail is open year 'round.

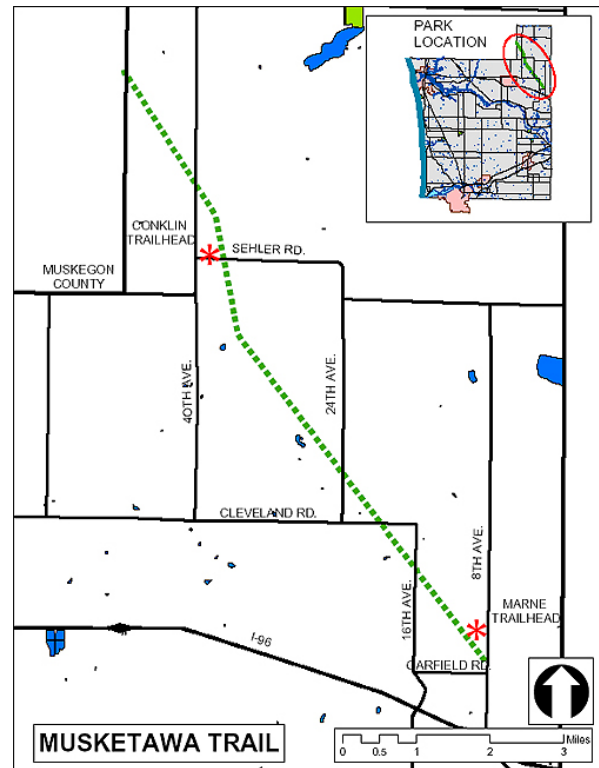
Fees

There are no fees to use the Musketawa Trail.

Directions

In Ottawa County, parking for the trail is located on 8th Avenue near Marne and on Sehler Street near Conklin. See map below for parking locations.

For emergencies, call 911.



Ottawa County Parks & Recreation Commission

12220 Fillmore Street, West Olive, MI 49460

Phone: (616) 738-4810

Email: parks&rec@miottawa.org

Website: <http://www.miottawa.org/parks>