





Johnson Street Forest

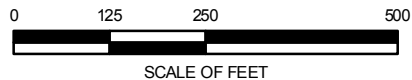
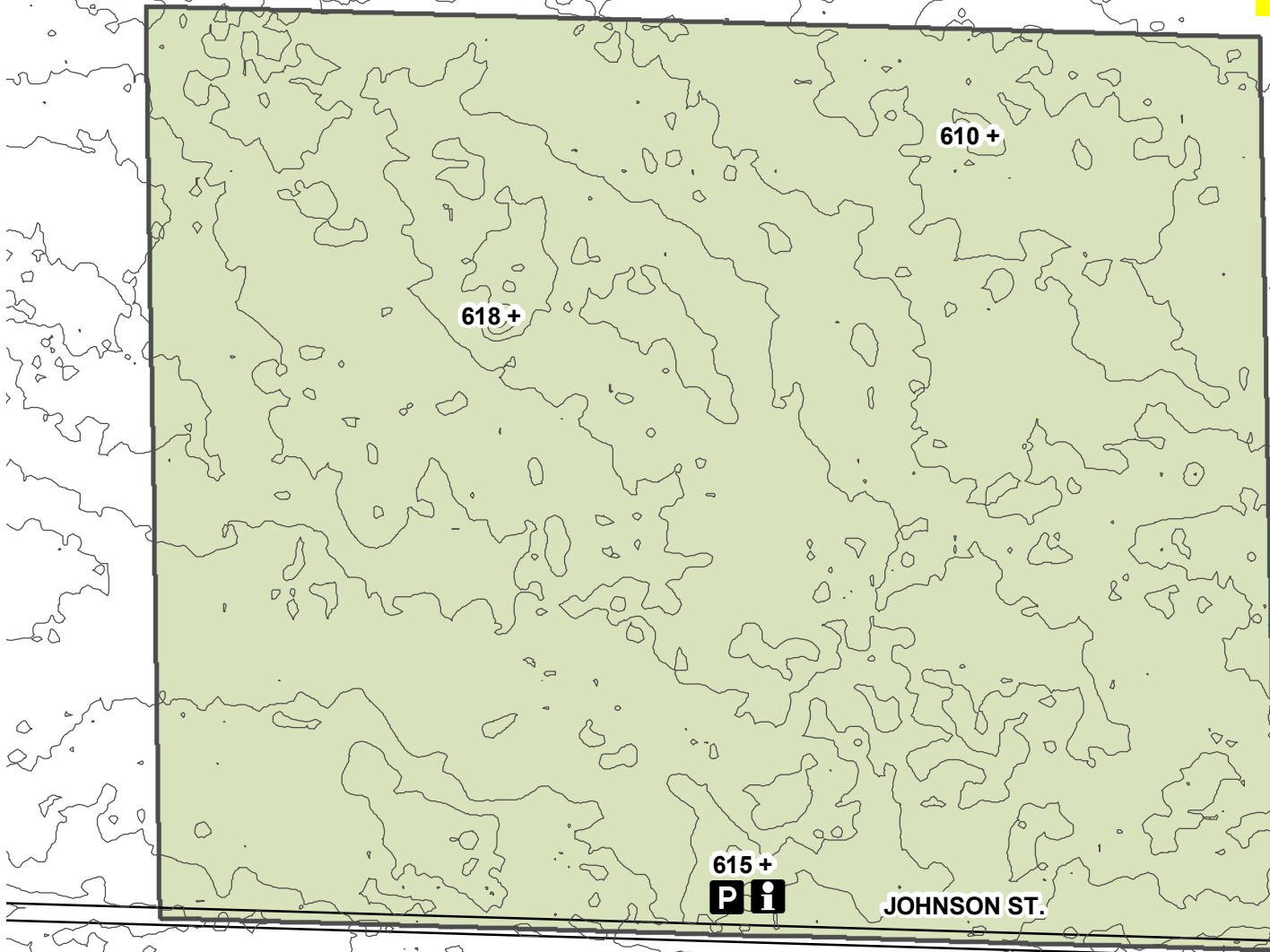
Robinson Township

PARK USER INFORMATION

No alcohol is permitted
No motor vehicles beyond parking area
Bicycles are NOT allowed on trails
Dogs are allowed off leash
No camping or fires
All Ottawa County Open Space rules

LEGEND

-  PARKING AREA (ROADSIDE)
-  INFORMATION KIOSK
-  2' TOPOGRAPHIC CONTOUR
-  SPOT ELEVATION



Ottawa County Parks &
Recreation Commission

Johnson Street Forest

12255 Johnson Street
Grand Haven, Mi 49417

This Open Space Land is 50 acres of mixed hardwoods. There are no designated trails or restroom facilities.

Facilities and Activities

- Small parking area and information kiosk
- Off-trail hiking and cross-country skiing
- Dogs are allowed on or off leash

Hunting

Firearm and archery hunting are permitted at Johnson Street Forest.

Park Hours

Johnson Street Forest is open year-round, however, the parking area is not plowed in winter. Open Space lands are open from 5 a.m. to 10 p.m.

Fees

There are no park fees.

Rules and Regulations

The following activities are prohibited at Johnson Street Forest:

- Trapping
- Fires
- Camping
- Bicycles
- All motorized vehicles
- Horses

Directions

Johnson Street Forest is located in Robinson Township. A small parking area is located on Johnson Street between 120th and 128th Avenues.

For emergencies, call 911.



Ottawa County Parks & Recreation Commission

12220 Fillmore Street, West Olive, MI 49460

Phone: (616) 738-4810

Email: parks&rec@miottawa.org

Website: <http://www.miottawa.org/parks>